

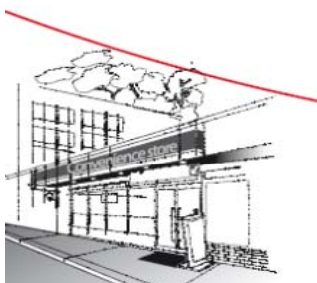


VIRGO & VIRGO PLUG-IN

HORIZONTAL REFRIGERATED DISPLAY CABINETS
serve-overs (pastry)



Technical Data Sheet



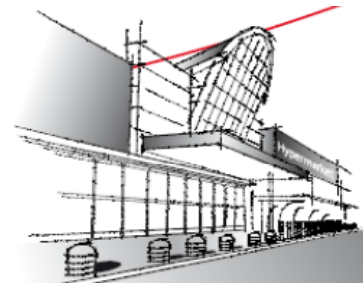
English



ISO 9001:2008

Tekso Quality Assurance Department

February, 2012 rev03



TECHNICAL DATA SHEET

CLIMATE CLASS 3 : 25° C - 60% RH (EN ISO 23953)

Modules		Unit	937	1250	1875	2500			
Dimensions	Length of Module <i>without endwall</i>	mm	937	1250	1875	2500			
	Thickness of Endwall		40						
	Total Display Area (TDA)	m ²	1,22	1,63	2,45	3,26			
	Display Opening Area		0,78	1,04	1,56	2,08			
	Net Volume	liter	417	556	835	1113			
Refrigeration Data	Refrigeration Load	3M2	<i>ti: 2°C/4°C (Te: -12°C)</i>		W	345	460	690	920
	Expansion Valve and Nozzle (Danfoss TEV)	(R134a) (3M1, 3M2), (*) <i>interior balance</i>		type		00 (*)	00 (*)	00 (*)	01 (*)
		(R404A) (3M1, 3M2) (*) <i>interior balance</i>				00 (*)	00 (*)	00 (*)	01 (*)
	Expansion Valve and Nozzle (Danfoss AKV)	(R134a) (3M1, 3M2)		type		10-1	10-1	10-1	10-2
(R404A) (3M1, 3M2)			10-1		10-1	10-1	10-2		
Electrical Data	Lighting	Standart (T8) <i>canopy single row</i>		W		N/A	N/A	N/A	N/A
		Optional (T5) <i>canopy single row</i>				N/A	N/A	N/A	N/A
		Optional (LED) <i>canopy</i>				N/A	N/A	N/A	N/A
		Standart (T8) <i>shelf lighting (each row)</i>				18	36	36	72
		Optional (T5) <i>shelf lighting (each row)</i>				14	28	42	56
		Optional (LED) <i>shelf lighting (each row)</i>				7	11	14	22
	Heaters	Trim heater glass		W		N/A	N/A	N/A	N/A
		Defrost heater (3M2)				N/A	N/A	N/A	N/A
	Fan Motor	Shaded Pole (<i>standart</i>)		W		N/A	N/A	N/A	N/A
		Electronic - Energy Saving (<i>optional</i>)				N/A	N/A	N/A	N/A
Antimist fan.			25	25	50	50			
Internal Fittings	Shelves & Depths	min./standart/max. (<i>rows</i>)		n°/(mm)	- / 3 (275) / 3 (275) <i>upper 2 of shelves are not refrigerated, lower shelf is refrigerated</i>				
		with lighting standart / max. (<i>rows</i>)		n°	2 / 2				
info	All datas are based on 2 levels non lighting shelf								
Recommended Setting Parameters & Temperature Classes	Compressor Regulation Parameters								
	Compressor cut out temperature (supply air temperature)		3M2 (<i>ti: 2/4 °C</i>)	°C	+2				
	Compressor cut in temperature (supply air temperature)		3M2 (<i>ti: 2/4 °C</i>)		+4				
	Defrost Regulation Parameters								
	Defrost interval time		hour	6					
	Defrost endurance time		minute	25					
	Defrost termination temperature		°C	25					
	Fan Regulation Parameters								
	Fan cut in during defrost		-	no fan (static)					
	Alarm Regulation Parameters								
	High temperature alarm		°C	25					
	Low temperature alarm			-5					
	Power-on alarm override		minute	1					
	Defrost alarm override			1					
	Temperature alarm override			30					
Temperature Classes			Highest Temperature		Lowest Temperature				
M2		°C	+7		-1				

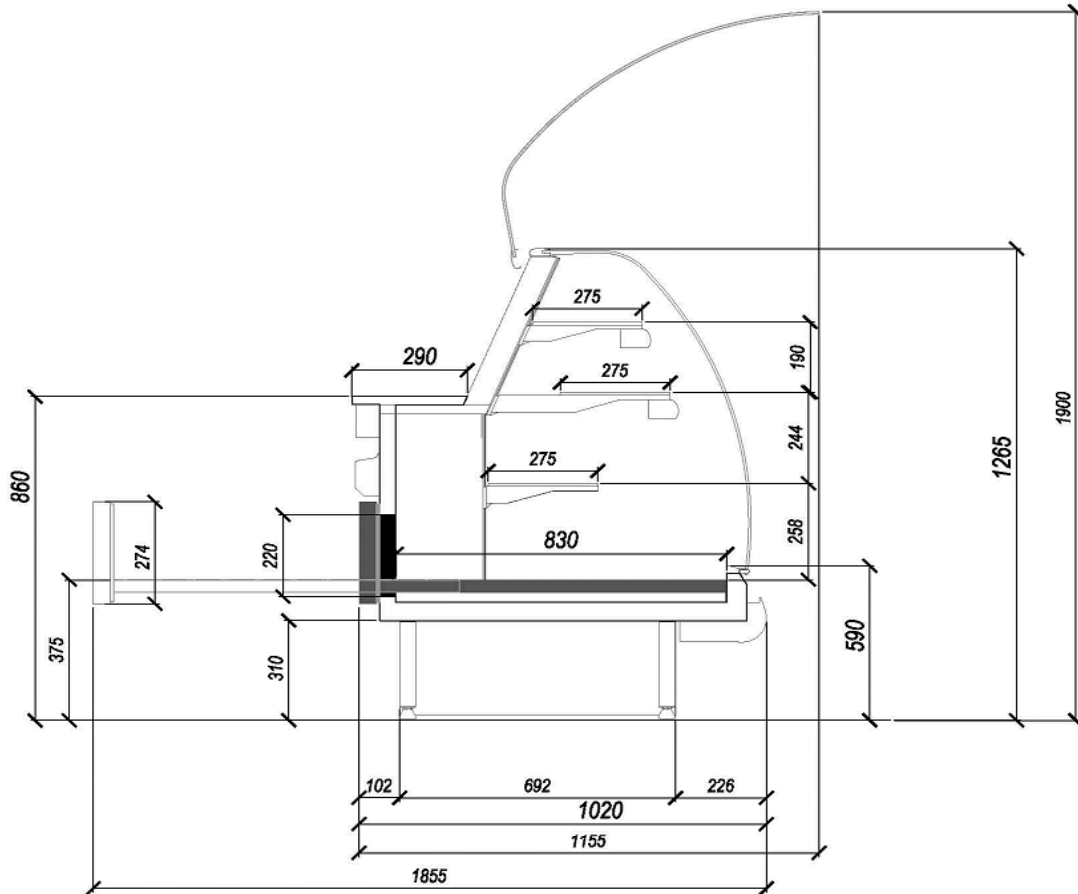
TECHNICAL DATA SHEET

CLIMATE CLASS 3 : 25° C - 60% RH (EN ISO 23953)

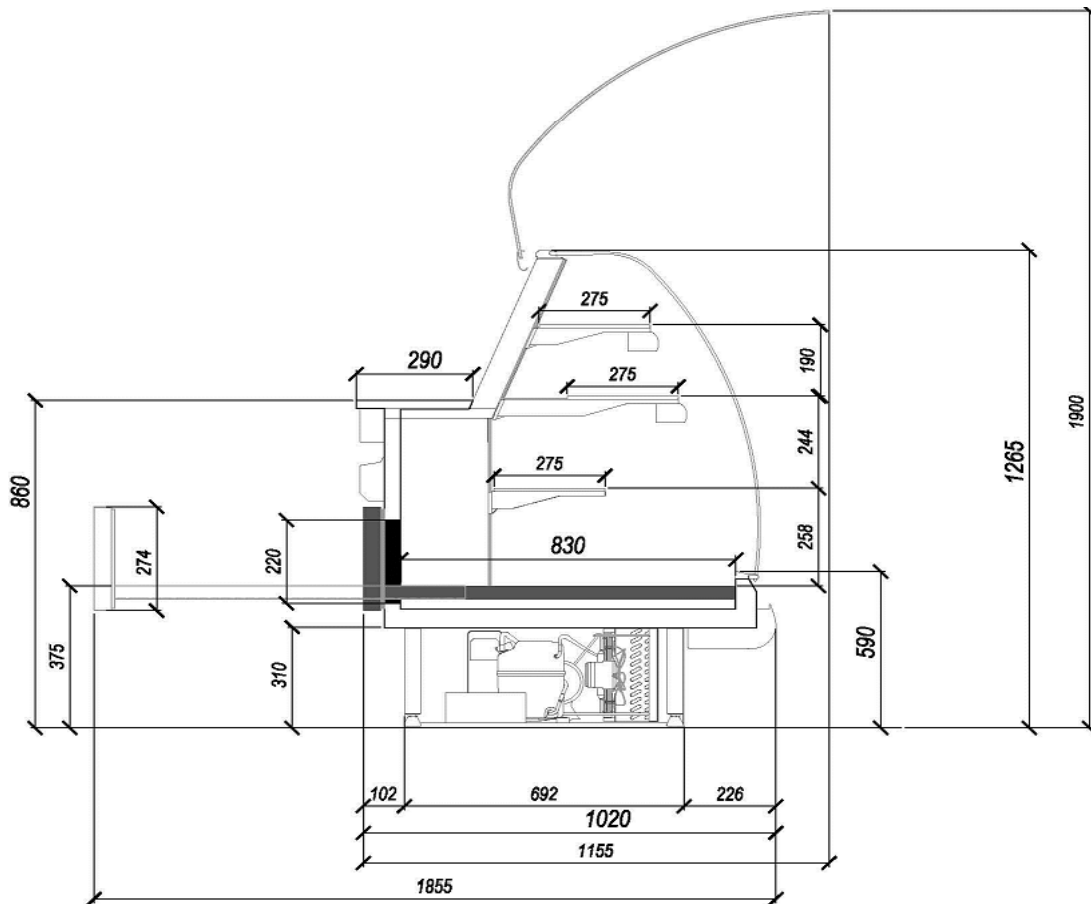
Modules		Unit	1250	1875	2500			
Dimensions	Length of Module <i>without endwall</i>	mm	1250	1875	2500			
	Thickness of Endwall		40					
	Total Display Area (TDA)	m ²	1,63	2,45	3,26			
	Display Opening Area		1,04	1,56	2,08			
	Net Volume	liter	556	835	1113			
Refrigeration Data	Refrigeration Load	3M2	ti: 2°C/4°C (T _e : -12°C)		W	460	690	920
	Expansion Valve and Nozzle (Danfoss TEV)	(R134a) (3M1, 3M2), (*)interior balance		type		00 (*)	00 (*)	01 (*)
		(R404A)(3M1, 3M2) (*)interior balance				00 (*)	00 (*)	01 (*)
Expansion Valve and Nozzle (Danfoss AKV)	(R134a) (3M1, 3M2)		type		10-1	10-1	10-2	
	(R404A) (3M1, 3M2)				10-1	10-1	10-2	
Electrical Data	Lighting	Standart (T8) <i>canopy single row</i>		W		N/A	N/A	N/A
		Optional (T5) <i>canopy single row</i>				N/A	N/A	N/A
		Optional (LED) <i>canopy</i>				N/A	N/A	N/A
		Standart (T8) <i>shelf lighting (each row)</i>				36	36	72
		Optional (T5) <i>shelf lighting (each row)</i>				28	42	56
		Optional (LED) <i>shelf lighting (each row)</i>				11	14	22
	Heaters	Trim heater glass		W		N/A	N/A	N/A
		Defrost heater (3M2)				N/A	N/A	N/A
		Vaporizing container heater				270	270	540
	Fan Motor	Shaded Pole (<i>standart</i>)		W		N/A	N/A	N/A
Electronic - Energy Saving (<i>optional</i>)			N/A		N/A	N/A		
Antimist fan.			25		50	50		
Internal Fittings	Shelves & Depths	min./standart/max. (<i>rows</i>)		n°/(mm)	- / 3 (275) / 3 (275) <i>upper 2 of shelves are not refrigerated, lower shelf is refrigerated</i>			
		with lighting standart / max. (<i>rows</i>)		n°	2 / 2			
info	All datas are based on 2 levels non lighting shelves							
Recommended Setting Parameters & Temperature Classes	Compressor Regulation Parameters							
	Compressor cut out temperature (supply air temperature)	3M2 (ti: 2/4 °C)	°C	+2				
	Compressor cut in temperature (supply air temperature)			+4				
	Defrost Regulation Parameters							
	Defrost interval time	hour	6					
	Defrost endurance time	minute	25					
	Defrost termination temperature	°C	25					
	Fan Regulation Parameters							
	Fan cut in during defrost	-	no fan (static)					
	Alarm Regulation Parameters							
	High temperature alarm	°C	25					
	Low temperature alarm		-5					
	Power-on alarm override	minute	1					
	Defrost alarm override		1					
	Temperature alarm override		30					
Temperature Classes			Highest Temperature	Lowest Temperature				
M2	°C	+7	-1					

TECHNICAL DATA SHEET

SECTIONAL VIEW - VIRGO



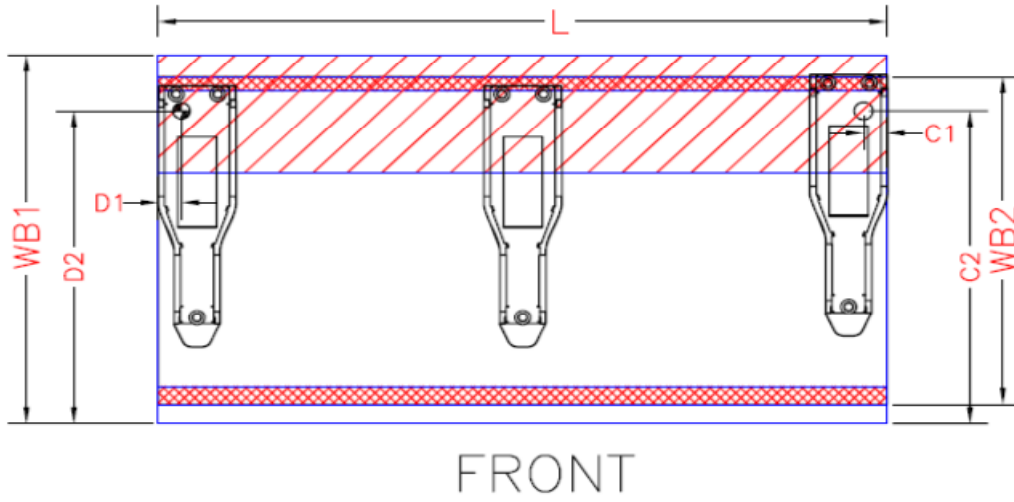
SECTIONAL VIEW - VIRGO PLUG-IN



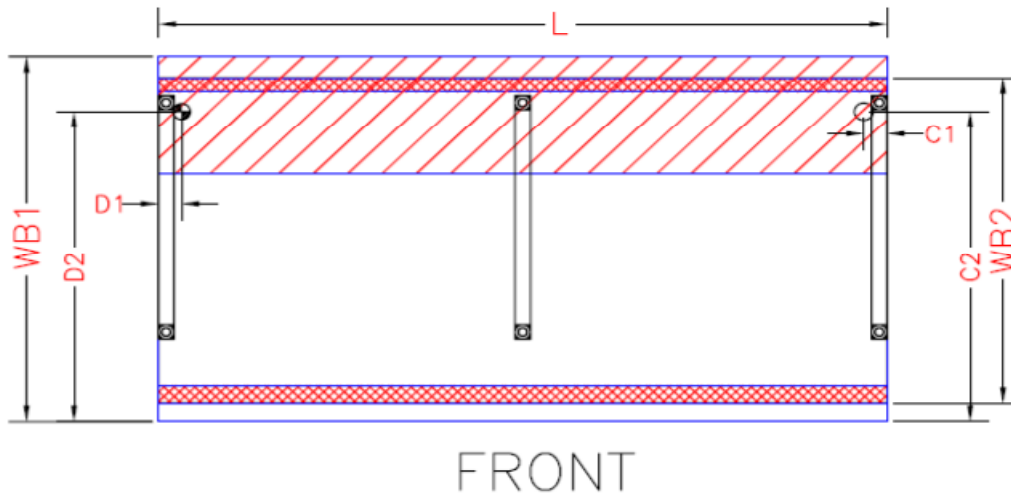
TECHNICAL DATA SHEET

PLAN VIEW

VIRGO BA



VIRGO AK



- $\phi 48$ DRAINAGE
- $\phi 48$ COPPER TUBE
- $\phi 48$ ELECTRICAL CONNECTION

Modules	Length (mm)	937	1250	1875	2500	SYMBOL	
VIRGO	L	937	1250	1875	2500	L	Length
	C1	60				WB	Width Base
	C2	877				D	Drain
	WB1	1032				C	Copper Tube
	WB2	920				<i>Note: Dimensions are in mm</i>	
	D1	60					
	D2	877					